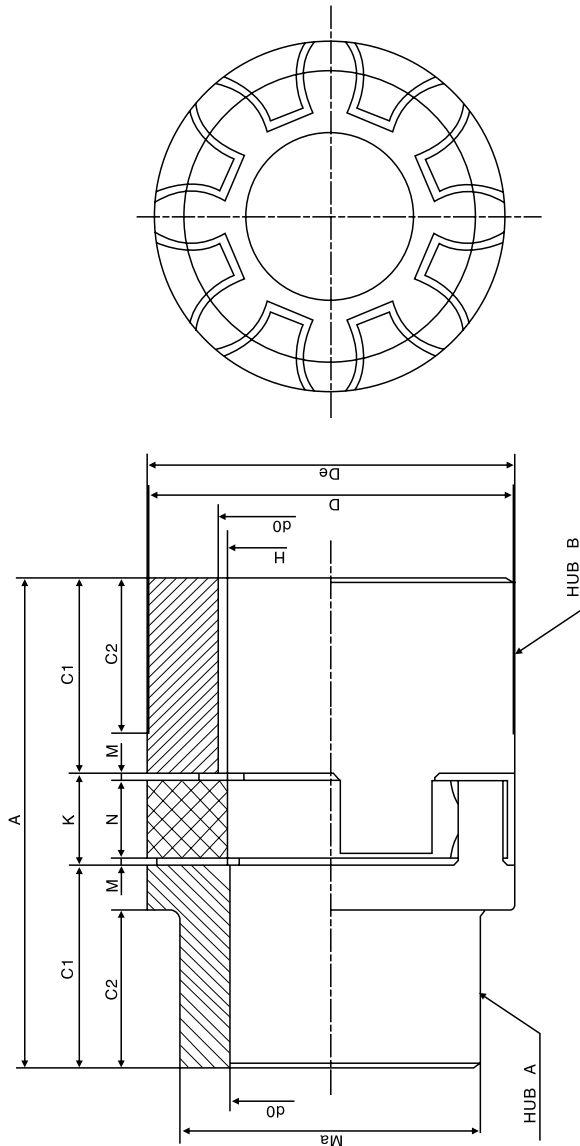


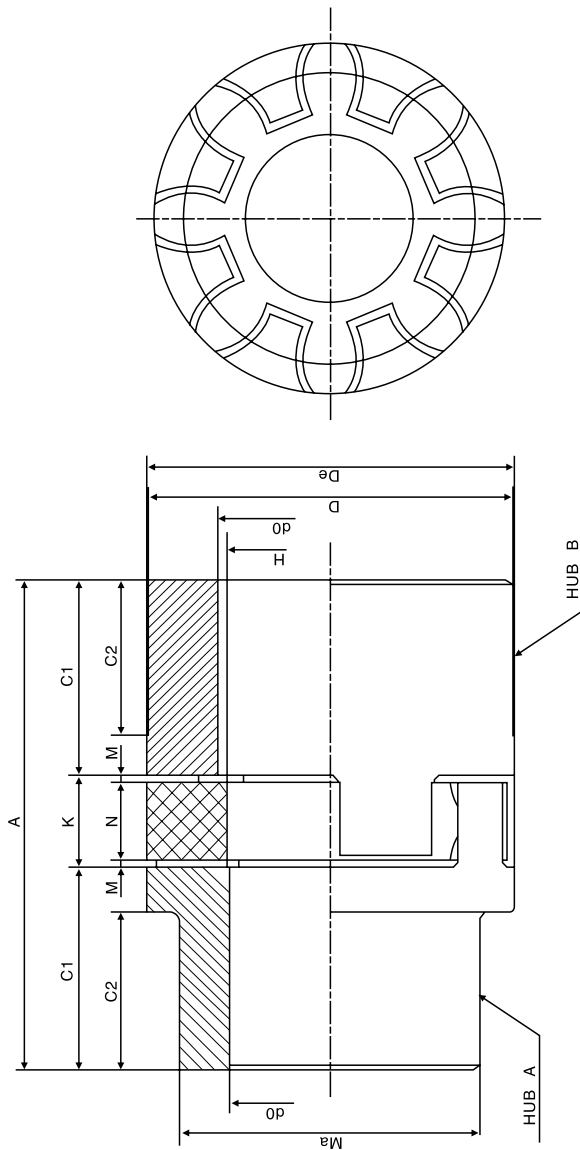
爪式连轴器
Taper Bushing



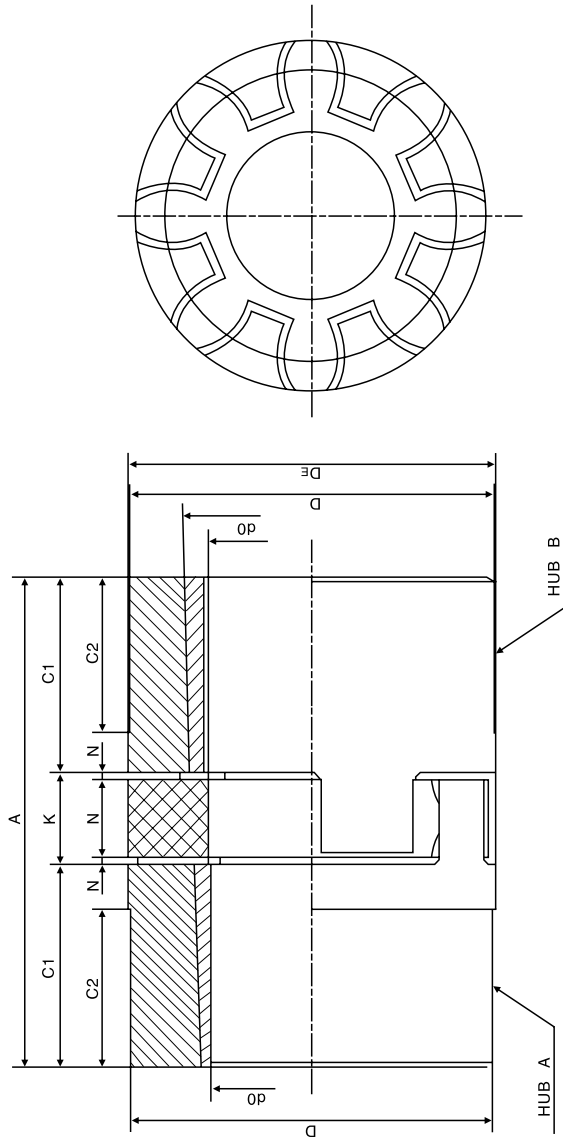


型号 TYPE	材料 MAT.	孔 BORE		A	C1	K	M	H	Ma	Mb	De	N	C2
		d min	d max										
NV19-24	CAST IRON	19	24	66	25	16	2	18	30	40	40	12	19
NV24-32		24	32	78	30	18	2	27	40	55	55	14	24
NV28-38		28	38	90	35	20	2.5	30	48	65	65	15	27.5
NV38-45		38	45	114	45	24	3	38	66	78	80	18	36.5
NV42-55		42	55	126	50	26	3	46	75	94	95	20	40
NV48-60		48	60	140	56	28	3.5	51	85	104	105	21	45
NV55-70		55	70	160	65	30	4	60	98	118	120	22	52
NV65-75		65	75	185	75	35	4.5	68	115	134	135	26	61
NV75-90		75	90	210	85	40	5	80	135	158	160	30	69
NV90-100		90	100	245	100	45	5.5	100	160	180	200	34	81

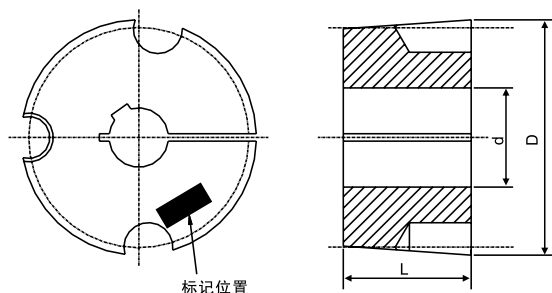
凸爪式联轴器利用一个鼓形瓣花型弹性体置于联轴器之间以实现两半联轴器的弹性联接
 特点:结构简单、零件数量少、安装方便、外型尺寸小、工作可靠、惯性小、不需要维护、弹性体硬度一般为邵式80-98度,允许工作温度-35° ~+80° C
 弹性体一般采用聚酯聚氨脂它具有极高的弹性和耐磨性,而且耐冲击、耐油性等优点。弹性体硬度一般为邵式80-98度,提高弹性体的硬度可提高承载能力
 Jaw coupling achieve resilient connection with a plum-blossom-shape spider placed between the jaws of two half couplings.
 Characteristics: simple structure, small amounts of parts, easy installation, small dimensions, reliable operation and low inertia.
 The product requires little maintenance, the working temperature of which is between -35° ~+80° C.
 The spider is generally made of polyurethane with features in high flexibility and wear-resistance, shockproof and oil-resistance, etc. It's shore hardness is around degree of 80-98 so that the bearing capacity of the spider is improved.



型号 TYPE	材料 MAT.	孔 BORE		A	C1	K	M	H	Ma	Mb	De	N	C2
		d min	d max										
NV-19/24AB	ALUMINIUM	19	24	66	25	16	2	18	30	40	40	12	19
NV-24/32AB		24	32	78	30	18	2	27	40	56	55	14	24
NV-28/38AB		28	38	90	35	20	2.5	30	48	66	65	15	27.5
NV-38/45AB		38	45	114	45	24	3	38	66	78	80	18	36.5



型号 TYPE	材料 MAT.	孔 BORE		锥孔号 BUSH	A	C1	K	M	D	De	N	C2
		d min	d max									
NV 28/38 -1108 A/B	CAST IRON	9	28	1108	66	23	20	2.5	65	65	15	—
NV 38/45 -1108 A/B		9	28	1108	70	23	24	3	78	80	18	15
NV 42/55 -1610 A/B		10	42	1610	78	26	26	3	94	95	20	16
NV 48/60 -1615 A/B		10	42	1615	106	39	28	3.5	104	105	21	28
NV 55/70 -2012 A/B		12	50	2012	96	33	30	4	118	120	22	20
NV 75/90 -2517 A/B		16	60	2517	144	52	40	5	158	160	30	36



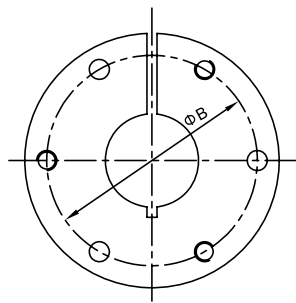
锥套组装拆卸说明

- 1、在组装前，仔细清理孔及锥度部位
- 2、把锥套装入带轮，把带轮上的螺纹孔与锥套的光孔对准拧入螺钉或螺栓
- 3、拧紧螺钉或螺栓
- 4、清洁轴，把带轮装到轴上，对准并拧紧螺钉或螺栓
- 5、拆卸：拆开螺钉或螺栓，将螺钉或螺栓拧入拆卸孔，拧紧他们直至将锥套从带轮上取下

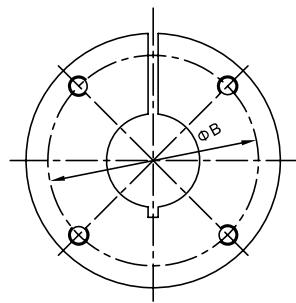
Assembly and disassembly instructions

- 1、Clean the bore and taper parts of the bushing carefully before assembling.
- 2、Insert the bushing into the pulley, upon proper alignment of threaded holes and unthreaded holes, insert the screws or bolts.
- 3、Tighten the screws or bolts.
- 4、Clean the shaft. Fit pulley with taper bush on shaft, tighten screws or bolts after alignment.
- 5、Disassembly: Loosen and remove screws or bolts, place them in the holes of the bushing. Tighten the screws or bolts until the bushing can be removed from the pulley.

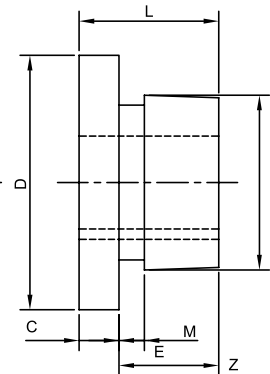
规格 TYPE	孔径(d mm)	L	D	顶丝(Setscrew)				
				数量 Qty	尺寸 Size	长度 Length	扳手型号 Wrench type	螺钉锁紧扭力矩 Screw Tightening Torquer
1008	mm 9 10 11 12 14 15 16 18 19 20 22 24 25	22.3	35	2	1/4	13	3	5.5
	inch 3/8 1/2 5/8 3/4 7/8 1							
1108	mm 9 10 11 12 14 15 16 17 18 19 20 22 24 25 26 27 28	22.3	38	2	1/4	13	3	5.5
	inch 3/8 1/2 5/8 3/4 7/8 1 1/8							
1210	mm 11 12 14 15 16 18 19 20 22 24 25 26 28 30 32	25.4	47	2	3/8	16	5	20
	inch 1/2 5/8 3/4 7/8 1 1/8 1 1/4 1 1/2							
1215	mm 11 12 14 15 16 18 19 20 22 24 25 26 28 30 32	38.1	47	2	3/8	16	5	20
	inch 1/2 5/8 3/4 7/8 1 1 1/8 1 1/4							
1310	mm 12 14 15 16 18 19 20 22 24 25 28 30 32 35	25.4	52	2	3/8	16	5	20
	inch 1/2 5/8 3/4 7/8 1 1 1/8 1 1/4							
1610	mm 12 14 15 16 18 19 20 22 24 25 26 28 30 32 35 38 40 42	25.4	57	2	3/8	16	5	20
	inch 1/2 5/8 3/4 7/8 1 1 1/8 1 1/4 1 3/8 1 1/2 1 5/8							
1615	mm 12 14 15 16 18 19 20 22 24 25 28 30 32 35 38 40 42	38.1	57	2	3/8	16	5	20
	inch 1/2 5/8 3/4 7/8 1 1 1/8 1 1/4 1 3/8 1 1/2 1 5/8 1 3/4							
2012	mm 14 15 16 18 19 20 22 24 25 26 28 30 32 35 38 40 42 45 48 50	31.8	70	2	3/8	22	6	20
	inch 5/8 3/4 7/8 1 1 1/8 1 1/4 1 3/8 1 1/2 1 5/8 1 3/4 1 7/8 2							
2517	mm 16 18 19 20 22 24 25 28 30 32 35 38 40 42 45 48 50 55 60 65	44.5	85	2	7/16	25	6	50
	inch 3/4 7/8 1 1/4 1 3/8 1 1/2 1 5/8 1 3/4 1 7/8 2 2 1/8 2 1/4 2 3/8 2 1/2							
3020	mm 22 25 28 30 32 35 38 40 42 45 48 50 55 57 60 65 70 75	50.8	108	2	1/2	32	8	90
	inch 1 1/4 1 3/8 1 1/2 1 5/8 1 3/4 1 7/8 2 2 1/8 2 1/4 2 3/8 2 1/2 2 5/8 2 3/4 2 7/8 3							
3030	mm 25 28 30 32 35 38 40 42 45 47 48 50 55 60 65 70 75	76.2	108	2	5/8	32	8	90
	inch 1 1/4 1 3/8 1 1/2 1 5/8 1 3/4 1 7/8 2 2 1/8 2 1/4 2 3/8 2 1/2 2 5/8 2 3/4 2 7/8 3							
3535	mm 25 28 30 32 35 38 40 42 45 48 50 55 60 65 70 75 80 85 90	88.9	127	2	1/2	38	10	115
	inch 1 1/2 1 5/8 1 3/4 1 7/8 2 2 1/8 2 1/4 2 3/8 2 1/2 2 5/8 2 3/4 2 7/8 3 3 1/8 3 1/4 3 3/8 3 1/2							
4040	mm 40 42 45 48 50 55 60 65 70 75 80 85 90 95 100	101.6	146	3	5/8	44	14	170
	inch 1 3/4 2 2 1/2 2 3/4 3 1/2 2 3/4 4							
4545	mm 55 60 65 70 75 80 85 90 95 100 105 110	114.3	162	3	3/4	51	14	195
	inch 3 3 1/2 4							
5050	mm 50 60 65 70 75 80 85 90 95 100 105 110 115 120 125	127	178	3	7/8	57	17	275
	inch 3 1/2 4							



"JA" TD "J"



"M" TD "W"



衬套 Bushing	尺寸 Dimension (Inches)							平头螺 钉要求 Cap Screws Required	孔径范围 Stock Bore Range			平均 Average
	C	D	L	M	N	E	螺栓分 布圆 Bolt Circle		最小 Minimum	最大 Maximum		重量 (约) Weight (Approx)
										标准 键槽 Standard Keyway	浅 键槽 Shallow Keyway	
JA	5/16	2	1	0.20	1.375	11/16	1.656	3-10 x 1	3/8	1	13/16	0.9
SH	7/16	2 11/16	1 5/16	0.23	1.871	7/8	2 1/4	3 1/4 x 1 3/8	1/2	1 3/8	1 5/8	1
SDS	7/16	3/8	1 5/16	0.23	2.187	7/8	2 11/16	3 1/4 x 1 3/8	1/2	1 5/8	1 15/16	1
SD	7/16	3/8	1 13/16	0.23	2.187	1 3/8	2 11/16	3 1/4 x 1 3/8	1/2	1 5/8	1 15/16	1.5
SK	9/16	3 7/8	1 15/16	0.23	2.812	1 3/8	3 5/16	3 5/16 x 2	1/2	2 1/8	1 1/2	2
SF	5/8	4 5/8	2 1/16	0.23	3.125	1 7/16	3 7/8	3 3/8 x 2	1/2	2 1/4	2 7/8	4
E	7/8	6	2 3/4	9/32	3.834	1 7/8	5	3 1/2 x 2 3/4	7/8	2 7/8	3 1/2	10.5
F	1	6 5/8	3 3/4	11/32	4.437	2 3/4	5 5/8	3 9/16 x 3 5/8	1	3 1/4	3 15/16	15
J	1 1/8	7 1/4	4 5/8	5/16	5.148	3 1/2	6 1/4	3 5/8 x 4 1/2	1 1/2	3 13/16	4 1/4	23
M	1 1/4	9	6 3/4	11/32	6.494	5 1/2	7 7/8	4 3/4 x 6 3/4	2	4 11/16	5 1/2	55
N	1 1/2	10	8 1/8	9/16	6.992	6 5/8	8 1/2	4 7/8 x 8	2 7/16	5 1/16	5 7/8	73
P+	1 3/4	11 3/4	9 3/8	5/8	8.242	7 5/8	10	4 1 x 9 1/2	2 15/16	5 13/16	5 13/16	120
W+	2	15	11 3/8	11/16	10.437	9 3/8	12 3/4	4 - 1 1/8 x 11 1/2	4	7 1/2	8 1/2	250
S+	3 1/4	17 3/4	15 3/4	3/4	12.125	12 1/2	156	5 - 1 1/4 x 15 1/2	6	8 1/4	10	400



NOVO

NOVO Machinery

以信誉求发展 · 以质量求生存

**STRIVES FOR THE DEVELOPMENT
BY THE PRESTIGE
TO STRIVE FOR THE SURVIVAL BY
THE QUALITY**